

A NEW SPECIES OF *CHRYSOBOTHRIS* (COLEOPTERA:
BUPRESTIDAE) FROM AMERICAN PLUM
(*PRUNUS AMERICANA* MARSH.)¹

GARY V. MANLEY AND STANLEY G. WELLSO

Dept. of Entomology & Agr. Res. Serv., USDA,
Michigan State Univ., East Lansing, Michigan 48824

ABSTRACT

A new species, *Chrysobothris sloicola*, is described from American plum (*Prunus americana* Marsh.) from Michigan. Male genitalia, protibia, clypeus and the last abdominal sternite of both sexes are illustrated.

A new species of *Chrysobothris* is described which may be confused in collections with specimens of *C. femorata* (Olivier).

Chrysobothris sloicola Manley and Wellso, **new species**
(Fig. 1A-F)

Holotype male. Form of *Chrysobothris femorata*, shining bronze-black dorsally with foveae appearing metallic gold in color; more shining ventrally than above. **Head** greenish bronze with clypeus and antennae greenish. Occiput with a broad, smooth, grooved longitudinal carina which forms a Y anteriorly; frons nearly flat, its surface coarsely, confluent punctate and clothed with long, erect, white hairs. Clypeus semicircularly rounded on each side of the median notch. Antennae slightly narrowed to apex, intermediate segments compact, about as long as wide; third segment nearly as long as the following 2 segments united; second segment small. **Pronotum** about twice as wide as long, widest at anterior and posterior one-third, sides sinuately concave at middle; apical margin sinuate; basal margin strongly sinuate; median lobe strongly produced and broadly rounded in front of scutellum; disk convex, slightly uneven with a longitudinal median depression running full length; surface irregularly punctate with slightly elevated smooth spaces. Scutellum small, triangular. **Elytra** distinctly wider than pronotum, sides rounded in front, then subparallel to behind middle, lateral margin arcuately serrulate with the serrulations largest on apical half; surface glabrous with irregular, longitudinal, smooth costae connected to one another by small transverse, irregular, smooth ridges, and interrupted by irregular densely punctured depressed areas; transverse foveae shallow and indistinct, appearing goldish. **Abdomen:** beneath strong shining magenta; sparsely, irregularly punctate and sparsely clothed with short, semierect, white hairs; lateral edges of abdominal sternites with slightly raised smooth areas which are purplish; last visible sternite emarginate at apex with a serrate submarginal ridge and coarsely serrate lateral margins. Prosternum irregularly punctured, densely pubescent with long white hairs. **Legs:** anterior femur with a large obtuse tooth, serrulate on outside. Anterior and middle tibiae reddish-

¹Michigan Agricultural Experiment Station Journal article 7033. Part of a cooperative project between the Entomology Department, Michigan State University, Michigan Agricultural Experiment Station and Agr. Res. Serv., USDA, East Lansing, MI 48824.

purple on lateral margins, strongly arcuate with many small spines on the inner margin, posterior tibiae rubineus; all tarsi black. **Size:** length 10.1mm, width 4.3mm.

Allotype female. Similar to male in size and form but differing in the following characters: head brownish, with only sparse hairs; antennae entirely metallic brownish; prosternum sparsely clothed with hairs; all legs reddish-purple in color; last abdominal segment only slightly emarginate. Length 10.0mm, width 4.3mm.

Types: Holotype male: MICHIGAN: Shiawassee County (T5NR1E Sec. 35) 29-VI-74, G. V. Manley, sweeping American plum (*Prunus americana*) [USNM]. **Allotype female:** Emerged from caged American plum wood collected in Shiawassee Co. (T5NR1E Sec. 21). Wood collected XII-73, emerged 13-VI-74 [G. V. Manley Collection (GVMC)]. **Paratype males:** One male emerged from American plum wood collected in Shiawassee Co. (T5NR1E Sec. 21) in 1971. One male emerged from American plum trunk about 3.5 inches in diameter collected in Shiawassee Co. (T5NR1E Sec. 21) in 1973 [GVMC and SGWC]. **Paratype female:** collected in Shiawassee Co. (T5NR1E Sec. 35) on 9-VII-74 from tanglefoot on the trunk of an American plum tree [SGWC].

This species keys to *C. femorata* (Olivier) in Fisher (1942) but can be separated from other North American species by the shape of the male genitalia. The species has a shining dorsal surface and the foveae on elytra are shallow, appearing goldish. Only slight differences in size were noted in the 5 specimens; males ranged from 9.7 to 11.0mm long and 3.9 to 4.3mm wide, females from 10.1 to 10.6mm long and 4.2 to 4.3mm wide.

Acknowledgment: We thank Marian Mahler for the illustrations.

LITERATURE CITED

FISHER, W. S. 1942. A revision of the North American species of buprestid beetles belonging to the tribe Chrysobothrini. U. S. Dept. Agr. Misc. Publ. 470:1-275.

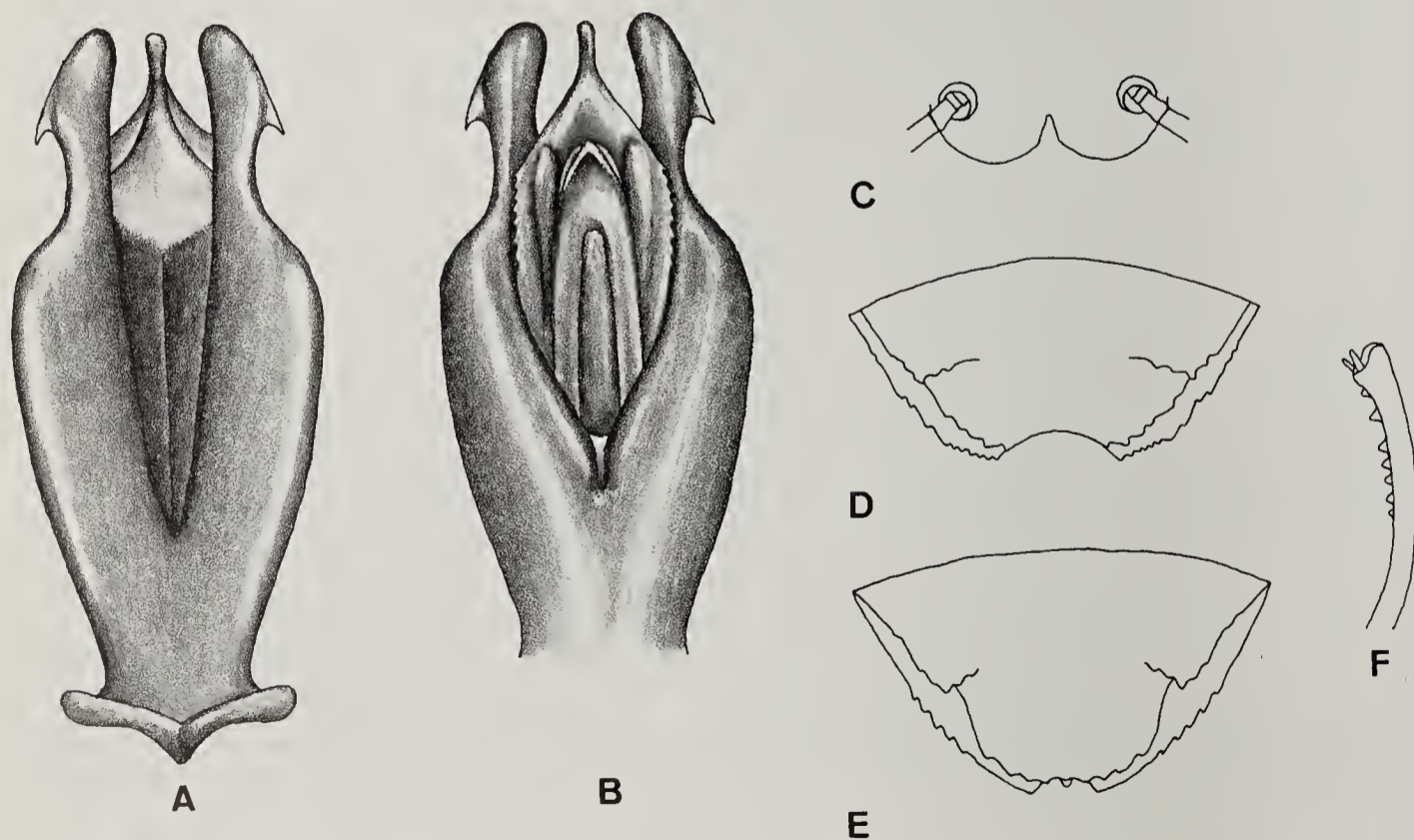


Fig. 1. *Chrysobothris sloicola*, n. sp.: Dorsal (A) and ventral (B) surface of male genitalia; male clypeus (C); 5th sternite, male (D); 5th sternite, female (E); and protibia, male (F).